

Woodcore Panel - CWC HPL System

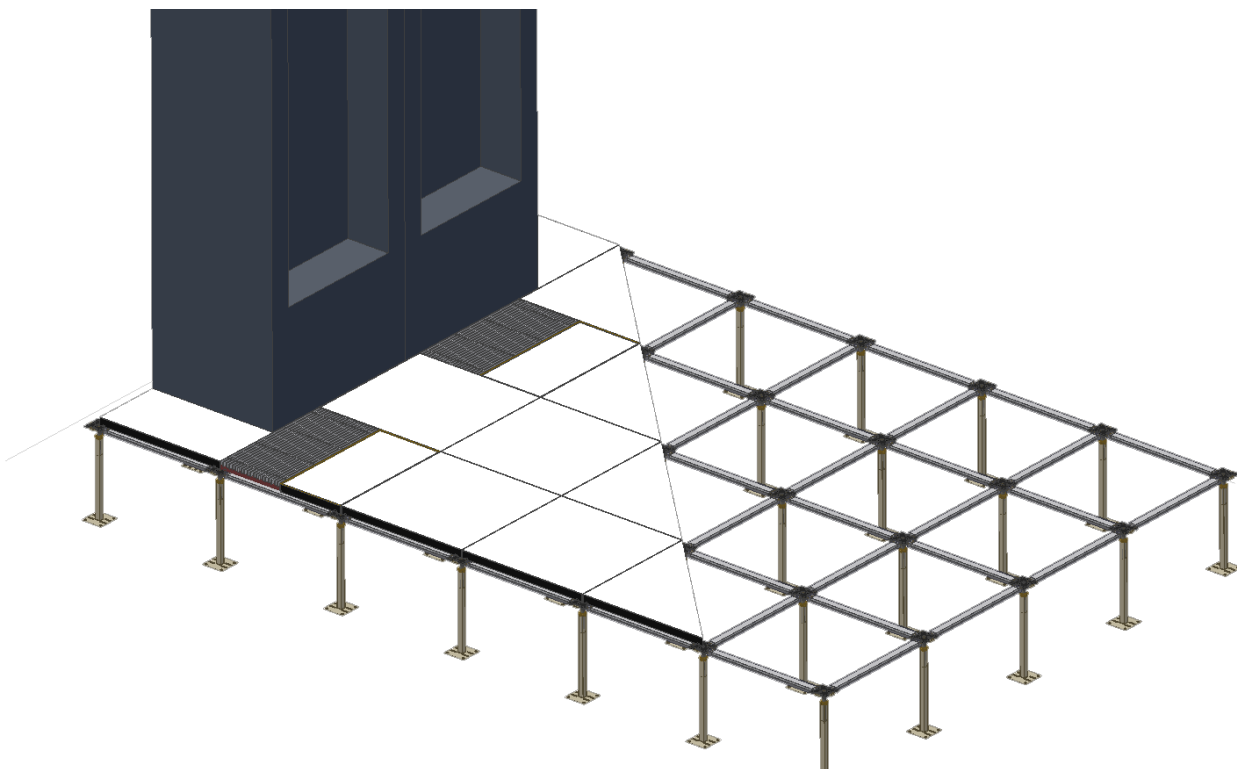
System Overview:

The CWC system is designed to cater for small to medium data/comms/switch room environments. This panel was originally developed to give builders, architects and building owners an alternative to the cementitious panel.

System Applications:

Any small to medium sized application with the necessity for an antistatic high pressure laminate finish such as:

1. Switch rooms
2. Data rooms
3. Comms rooms
4. Computer rooms
5. Server rooms



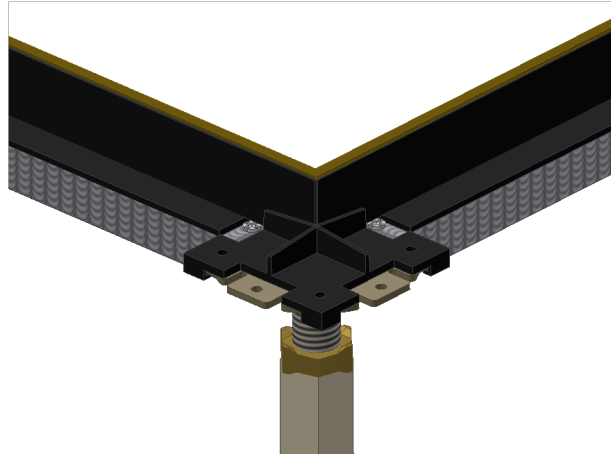
Design Features

HPL:

1.6mm high pressure laminate finish applied to panel in ASP standard finish. Custom and specialised HPL colours available on request. The panel is edged with an ABS plastic trim to protect the water resistant chipboard core.

Gravity Fixed Panels:

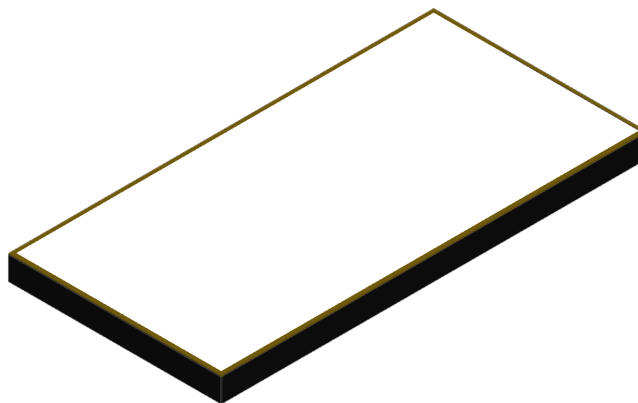
Panels are gravity fixed to the pedestal head. Location of the panel is achieved using the gasket and its unique locating tabs.



300 x 600 Half Panel:

ASP has designed and manufactured a special full load bearing 300 x 600mm panel for the CWC system. This panel is used:

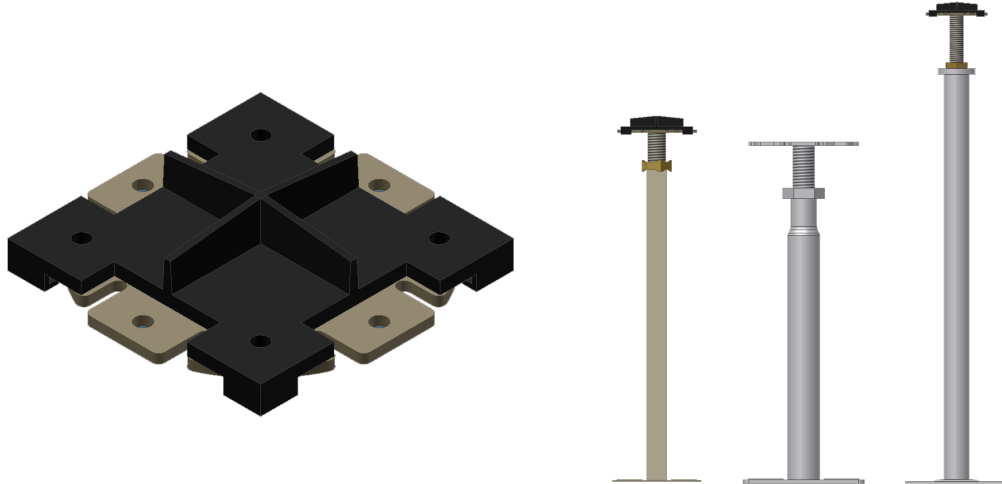
1. When there is a necessity for an 300 x 600 air grille.
2. When finishing off to the perimeter.



System Understructure

Pedestal: S8, S8-UK, S11

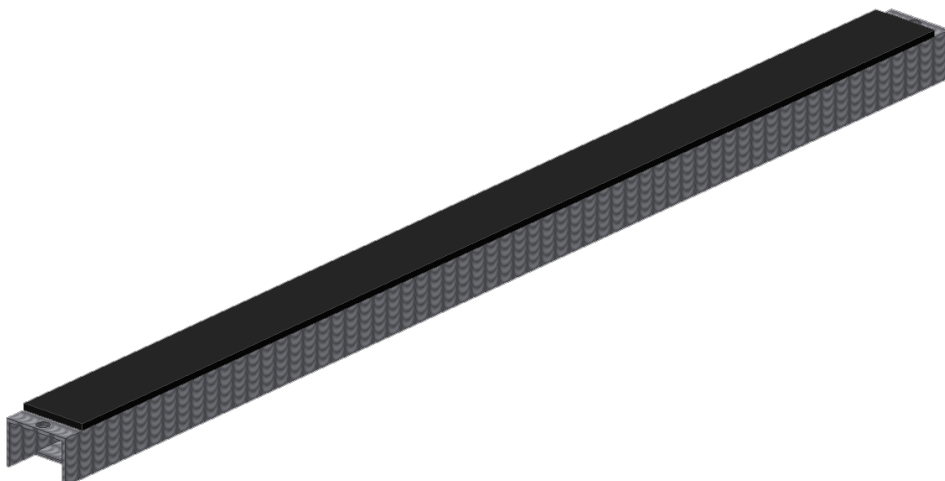
The pedestal head remains the same for the different FFH systems, up to 1200mm, the tube and base is thicker and classed as a heavy duty pedestal.



Stringer:

The stringer design is the same throughout the range. Predrilled holes at the end of each side allow the stringer to be screw fixed onto the pedestal head forming a rigid grid system.

The top of the stringer comprises of 3mm sponge rubber providing a buffer between the stringer and the panel.



Load Tolerances

Heavy Grade- 4.5kN

Panel Grade	Concentrated Load	Uniform Load	Ultimate Load	Impact Load
Heavy Grade	4.5 kN	12 kN/m ²	16.9 kN	670 N
Rolling Loads	75 x 25mm 10 passes	150 x 50mm 10,000 passes		200 x 75mm 250,000 passes
	4.5 kN	3.6 kN		2.25 kN

Industrial Grade- 6.6kN

Panel Grade	Concentrated Load	Uniform Load	Ultimate Load	Impact Load
Industrial Grade	6.6 kN	18 kN/m ²	26.7 kN	670 N
Rolling Loads	75 x 25mm 10 passes	150 x 50mm 10,000 passes		200 x 75mm 750,000 passes
	6.6 kN	5.6 kN		2.25 kN

Testing Data:

- The above results have been obtained from independent testing and have been tested in accordance to AS4154-1993 (General Access Floor (Elevated Floors)) and CISCA strict guidelines and regulations.
- As stated in the standards, the above mentioned panel deflection must not exceed 2.4mm based on a 24hr testing. In addition to this the above working loads for each panel carries a safety factor of 3 x the working load.

All ASP products are thoroughly tested and certified by qualified engineers. If you require further information please contact the technical team at ASP on (02) 9620 9915 or visit our contact page on www.aspfloors.com.au