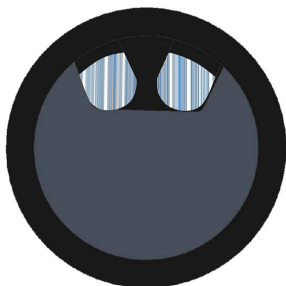


Grommets

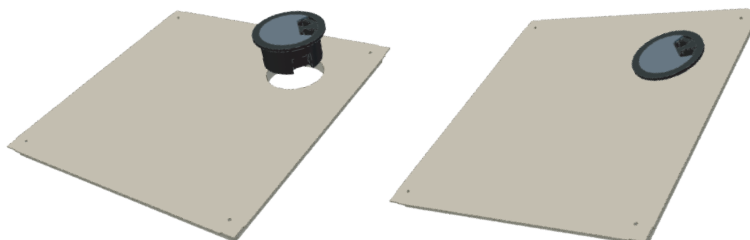
Circular Grommets

125-RSI-CE Screw in Grommet with brushes

This 125mm grommet is designed to be screw fixed into position.



Cut Out Size	124mm Diameter
Cable Penetration Size	Cable Penetration Size
Outer Flange Size	148mm Diameter



80-RSI-CE Push in Grommet



Cut Out Size	80mm Diameter
Cable Penetration Size	74mm Diameter
Outer Flange Size	86mm Diameter

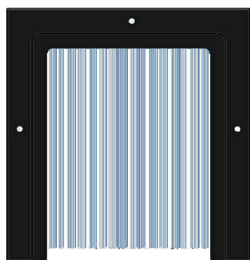
100-RSI-DB 100mm Double Brushed Circular Grommet



Cut Out Size	100mm Diameter
Cable Penetration Size	100mm Diameter
Outer Flange Size	144mm Diameter

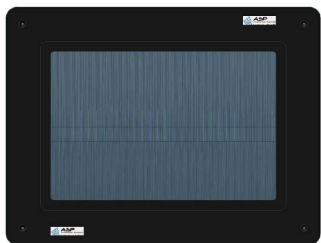
Cable Grommets - Non Brushed, Brushed and Twin Brushed COP WB Brush Series

COP WB Single Coarse Brush



Cut Out Size	190 x 160mm
Cable Penetration Size	170 x 140mm
Outer Flange Size	215 x 205mm

COP WBD 4 Sided Double Brush



Cut Out Size	235 x 165mm
Cable Penetration Size	200 x 130mm
Outer Flange Size	280 x 210mm

NOTE: Lid also available.

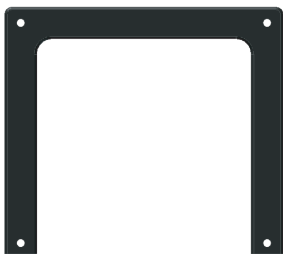
COP WBDH Three Sided Double Brush



Cut Out Size	235 x 85mm
Cable Penetration Size	200 x 65mm
Outer Flange Size	280 x 105mm

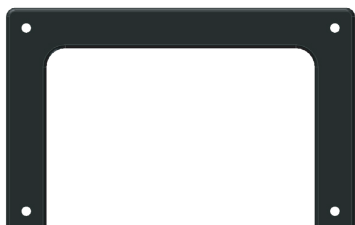
Cable Grommets AL Series

AL 1072



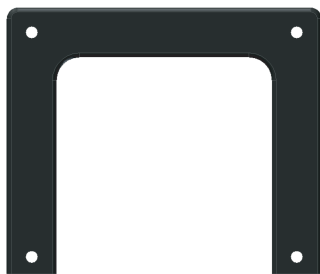
Cut Out Size	152 x 152mm
Cable Penetration Size	135 x 145mm
Outer Flange Size	170 x 190mm

AL 10049



Cut Out Size	107 x 155mm
Cable Penetration Size	95 x 145mm
Outer Flange Size	125 x 190mm

AL 10312



Cut Out Size	105 x 100mm
Cable Penetration Size	95 x 95mm
Outer Flange Size	125 x 190mm

Global Head Office

ASP Access Floors Pty Ltd
32 Prime Drive
Seven Hills, NSW 2147, Australia
Tel: +61 2 9620 9915
Fax: +61 2 9620 9918

www.aspfloors.com.au

Australia

ASP Access Floors Pty Ltd
32 Prime Drive
Seven Hills, NSW 2147, Australia
Tel: +61 2 9620 9915
Fax: +61 2 9620 9918

CS Access Systems

27 Furniss Rd
Landsdale, WA 6065, Australia
Tel: +61 437 801 702
Fax: +61 8 9403 4381

International Offices

ASP Access Floors - New Zealand
D21 930 Grt South Rd
Penrose, Auckland
Tel: +64 9 443 0864
Fax: +64 9 444 8625

ASP Access Floors - United Kingdom

Unit 4, Ghyll Industrial Estate
Heathfield, East Sussex, TN21 8AW
Tel: +44 (0) 1435 865 120

AIM - Vietnam

Kim Do Building, Suite 404,
123 Le Loi Boulevard,
District 1, HCMC, Vietnam
Tel: +84 8 3821 8085
Fax: +84 8 3821 8086
www.aimup.com