

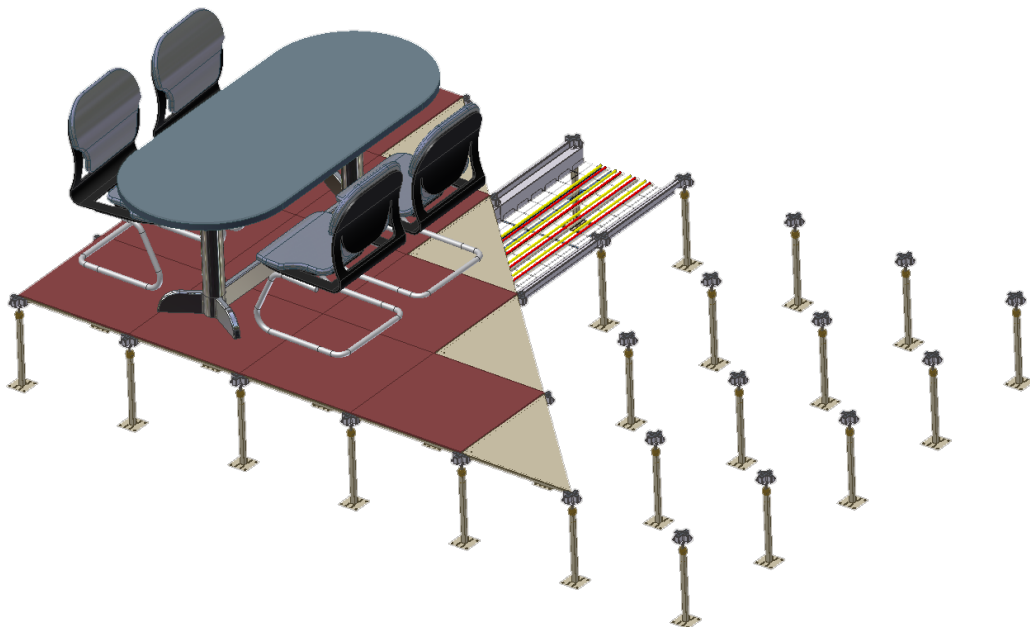
Steel Cementitious Panel - SC Ultra Fix System Overview

The SC Ultra fix panel is the most specified panel which is regarded as the standard system for general office like applications. This is a stringer less system where the panels are screw fixed onto the pedestal heads.

This system is widely used for power and data cable management, and also for applications where there is a need for an under floor baffle/plenum or air highway.

System Applications:

*General Offices
Banks
Learning Institution
Libraries
Casinos*



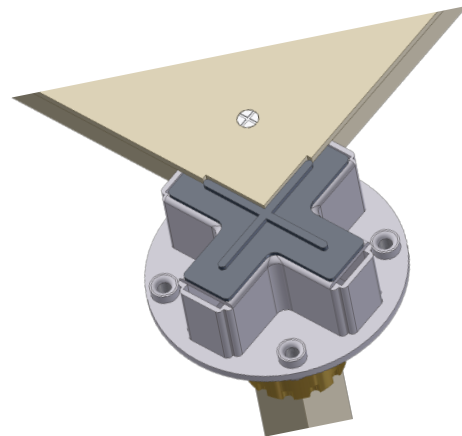
Design Features

In-built Expansion Joint and Cut Out:

The panel has a special expansion cut out, and the pedestal head is fitted with an expansion gasket designed to keep the panels separated by 0.3mm at all times. This eliminates the panels clicking or rubbing up against each other during expansion.

4 Corner Screw Panel

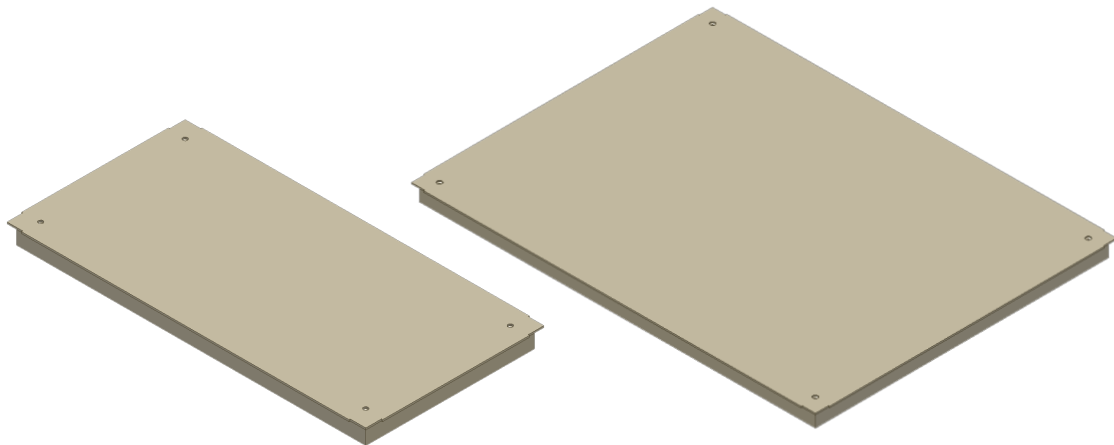
Screw holes in each corner to allow panels to be individually screw fixed providing greater rigidity as well as easier faster access.



Finishing Panels

Full bearing 600 x 300mm and 600 x 800mm panels designed to minimise small off cuts experienced with cutting around columns and finishing off to the perimeter.

The 600 x 300mm panel may also be used when there is a necessity for a 300 x 600mm air grille.



System Understructure

Field Pedestal: S1, S3, S3-UK, S5, S5-UK, S11, S14

The pedestal head remains the same for the entire system, where only minor changes are made to the pedestal tubes to suit the desired FFH.



Perimeter Pedestal: S2, S4, S4-UK, S6, S6-UK, S11, S15

The pedestal head remains the same for the entire system, where only minor changes are made to the pedestal tubes to suit the desired FFH.

